

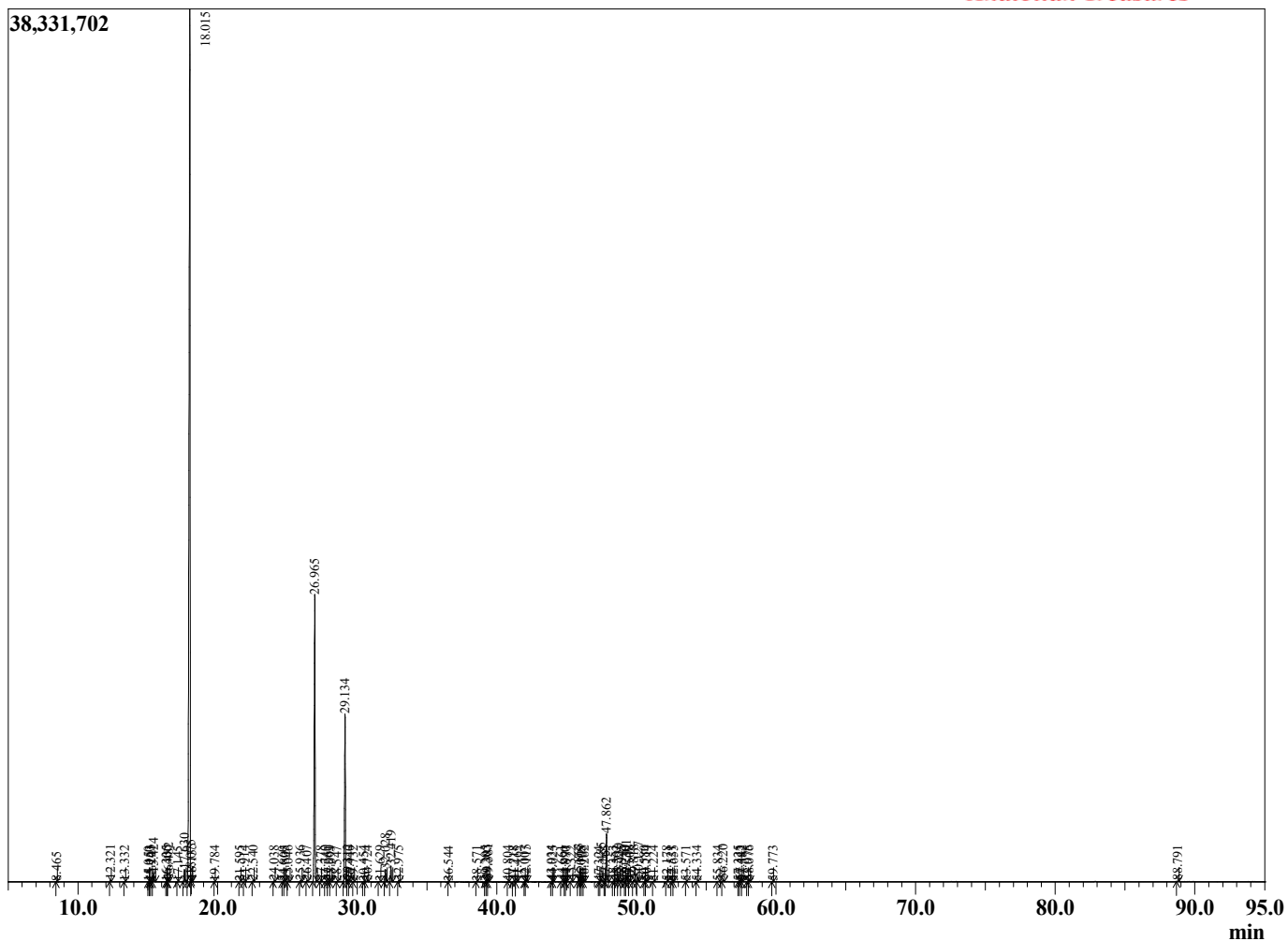
Sample Information

Sample Type : Essential Oil
 Sample Name : Bursera graveolens
 Injection : 0.10
 Volume :

Palo Santo
 Lot# ECW12-WK
 Country: Ecuador



Chromatogram Bursera graveolens



R.Time	Name	Area%
8.465	3-Methyl cyclopentanone	0.01
12.321	alpha-Pinene	0.07
13.332	3-Methyl cyclohexanone	0.01
15.050	Unidentified	0.01
15.163	Unidentified	0.02
15.241	Unidentified	0.02
15.424	Myrcene	0.38
16.335	Pseudolimonene	0.01
16.400	Unidentified	0.02
16.482	alpha-Phellandrene	0.17
17.145	alpha-Terpinene	0.01
17.630	para-Cymene	0.67
18.015	Limonene	63.04
18.075	beta-Phellandrene	0.23
18.135	1,8-Cineole	0.01
19.784	gamma-Terpinene	0.01
21.595	Terpinolene	0.02
21.914	para-Cymenene	0.03
22.540	Linalool	0.05
24.038	trans-para-Mentha-2,8-dienol	0.04
24.660	Limona ketone	0.01
24.805	cis-Limonene oxide	0.02
25.046	cis-para-Mentha-2,8-dienol + trans-Limonene	0.06
25.936	cis-beta-Terpineol	0.05
26.407	Menthone	0.05
26.965	Menthofuran	17.38
27.378	delta-Terpineol	0.03
27.740	trans-Isopulegone	0.03
27.961	Unidentified	0.04
28.099	Terpinen-4-ol	0.03
28.547	para-Cymen-8-ol	0.01
29.134	alpha-Terpineol	10.00
29.312	cis-Dihydrocarvone	0.12
29.440	cis-Piiperitenol	0.05
29.732	trans-Dihydrocarvone	0.01
30.454	Unidentified	0.02
30.724	trans-Carveol	0.07
31.629	cis-Carveol	0.04
32.028	Pulegone	0.69
32.419	Carvone	0.85
32.975	Unidentified	0.06
36.544	Unidentified	0.01
38.571	delta-Elementene	0.03
39.205	Unidentified	0.01
39.303	Menthylactone isomer	0.11
39.381	Menthylactone isomer	0.12
40.804	alpha-Ylangene	0.02
41.218	alpha-Copaene	0.05
41.465	Unidentified	0.01
42.007	beta-Cubebene	0.02
42.115	beta-Elementene	0.08
43.934	beta-Ylangene	0.04
44.025	Unidentified	0.02
44.661	beta-Copaene	0.05
44.890	Unidentified	0.01
44.977	cis-Thujopsene	0.05

R.Time	Name	Area%
45.322	Menthylactone isomer	0.04
45.863	Aromadendrene	0.14
46.005	Unidentified	0.01
46.108	trans-beta-Farnesene	0.02
46.262	alpha-Humulene	0.01
47.324	10-beta-H-Cadina-1(6),4-diene	0.01
47.485	trans-Cadina-1(6),4-diene	0.18
47.765	alpha-Amorphene	0.03
47.862	Germacrene D	2.94
48.353	Unidentified	0.04
48.562	trans-Murrola-4(14),5-diene	0.06
48.730	Menthylactone isomer	0.20
48.945	alpha-Murolene	0.08
49.230	alpha-Bulensene	0.02
49.301	trans,trans-alpha-Farnesene	0.36
49.508	beta-Bisabolene	0.02
49.818	gamma-Cadinene	0.09
50.127	delta-Cadinene	0.25
50.580	Menthylactone isomer	0.02
50.714	Unidentified	0.05
51.224	alpha-Cadinene	0.02
52.178	Unidentified	0.02
52.521	Germacrene B	0.01
52.655	trans-Nerolidol	0.01
53.571	Spathulenol	0.01
54.334	Unidentified	0.02
55.834	Unidentified	0.02
56.220	Humulane-1,6-dien-3-ol	0.09
57.325	tau-Cadinol	0.02
57.443	epi-alpha-Cadinol	0.04
57.582	delta-Cadinol	0.02
57.975	Unidentified	0.02
58.076	alpha-Cadinol	0.05
59.773	Unidentified	0.01
88.791	Unidentified	0.03
		100.00